



NUNN DESIGN®

How to Instructions Double-Sided Resin Butterfly Pendant



We look forward to bringing you exclusive innovations
and distinctive products this year and beyond.

www.nunndesign.com

NUNN DESIGN SUPPLIES:

- Grande Pendant Circle Open - Antique Silver (gpc-sb)
- 2 Double Sided Pendant Circle - Antique Silver (dpc-sb)
- Flat Tag Grande Circle Single Hole- Antique Silver (ftgcs-sb)
- Twig Connector Bar - Antique Silver (tcb-sb)
- Large Textured Cable Chain - Antique Silver (ltcc-sb)
- Small Hammered Cable Chain - Antique Silver (shfc-sb)
- Small Fine Cable Chain - Antique Silver (sfcc-sb)
- Ring Toggle - Antique Silver (rt-sb)
- Simple Toggle Bar - Antique Silver (stb-sb)
- 1/2 Collage Sheet Butterflies (csbf)
- Nunn Design Glue 2oz (glue 2oz)
- Gel du Soleil 4 oz (gel 4oz)

OTHER SUPPLIES:

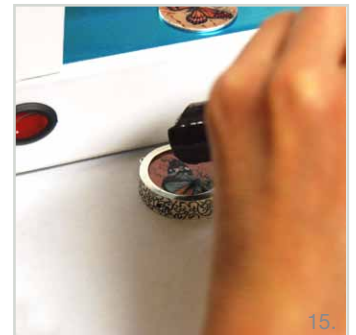
- Bond 527 Cement
- 22 gauge silver wire

TOOLS:

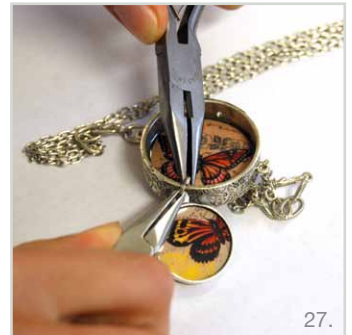
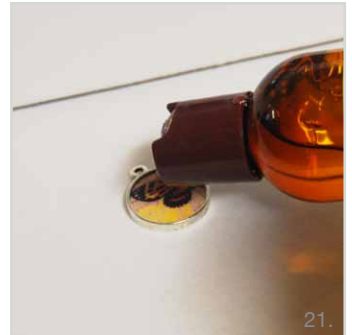
- 2 Pairs of Needle Nose Pliers
- Hole Punch Pliers 1.8mm (plhp18)
- Paint brush and water to rinse
- Q Tip

OPTIONAL:

- Punch Large Circle - 1.25 inch punch (plc)
- Punch Small Sided Circle - 13/16" (pdsc)
- UV lamp



How to Instructions Double-Sided Resin Butterfly Pendant



TO ASSEMBLE THE PENDANT

STEP 1: (Images 1-3)

Punch out two images from the collage sheet using the 1 ¼" circle punch.

STEP 2: (Images 4-6)

Paint a thin coat of Nunn Design Glue onto one side of the Flat Tag Grande Circle. Apply one of the collage images from Step 1 onto the wet glue and align the image up with the edges of the Flat Tag. Using your Q Tip, press down firmly in the center and in a circular motion starting small and getting larger, start to burnish down the paper to the Flat Tag.

STEP 3: (Image 7)

Paint a thin coat of glue over the top of the image and let it dry for thirty minutes. (*Thirty minutes is a good dry time for this project. The recommended dry time for projects using deeper bezels is 8 - 12 hours or overnight.*) This seals the image so the Gel du Soleil resin does not absorb into the paper, running the inks or darkening the image. Rinse your paintbrush and thoroughly dry.

STEP 4: (Image 8)

Repeat steps 2-3 on the second blank Flat Tag.

STEP 5: (Image 9 & 10)

Using the 1.8mm hole punch, punch a hole into the center of the Grande Pendant Circle Open Back. If there are any burrs, sand down lightly with an emery board to remove the rough edge.

STEP 6: (Images 11 & 12)

Using the 527 Bond Cement, apply a thin coat along the inside bottom edge of the Grande Pendant Circle Open Back and insert the Flat Tag Grande Circle.

STEP 7: (Images 13-16)

Drop a few drops of the Gel du Soleil into the center of the both the Flat Tag Grande Circle (from Step 2) and the Grande Pendant Circle Open Back. Tilt and roll the pendant around allowing the Gel du Soleil to flow to the edges. If you have bubbles, place an open flame slightly above the resin. The heat will make the air expand and pop.

STEP 8: (Images 17 & 18)

If you have a UV lamp available, place the pendant under the light for 20 minutes to fully cure. If you live outside of the constantly cloudy Pacific Northwest, place the pendant on your windowsill in the direct sunlight for 20-30 minutes to cure naturally with the UV rays from the sun. I suggest placing a glass dish over the piece to prevent dust for getting into the resin.

STEP 9: (Image 19)

Once both of the Flat Tags are cured, glue the tags back to back inside of the pendant, making the piece double sided.

STEP 10: (no image)

Punch out two images from the collage sheet using the 13/16" circle punch.

STEP 11: (no image)

Paint a thin coat of Nunn Design Glue into the base the Double Sided Circle Pendant. Apply one of the collage images from Step 10 into the wet glue. Using your Q Tip, press down firmly in the center and in a circular motion starting small and getting larger, start to burnish down the collage image into the Double Sided Pendant Circle. Make sure that your collage sheet is not off-center or slightly higher on one side than

another. I like to use a headpin and go along the edge of where the collage sheet and the sidewall come into contact making sure that I have a 90-degree angle where they meet. This prevents any of the Gel du Soleil from seeping underneath the image, causing the Gel not to cure.

STEP 12: (Image 20)

Once your collage image is burnished down into your Double Sided Pendant Circle, paint a thin coat of the Nunn Design Glue over the top of the image.

STEP 13: (no image)

Repeat steps 10-12 on the reverse side of the Double Sided Pendant Circle. Let both sides dry for 30 minutes. *(Thirty minutes is a good dry time for this project. The recommended dry time for projects using deeper bezels is 8 - 12 hours or overnight.)*

STEP 14: (Images 21-23)

Drop a few drops of the Gel du Soleil into the center of side one the Double Sided Pendant Circle. Tilt and roll the pendant around allowing the Gel du Soleil to flow to the edges. NOTE: Only apply a very small amount keeping the resin under the lip of the side (do not dome). This will prevent the cured resin from potentially being damaged when we turn it over and do the reverse side.

STEP 15: (no image)

Place under the UV lamp or in the direct sun for 20-30 minutes to cure.

STEP 16: (no image)

Once side 1 is cured, turn the pendant over and repeat Steps 14 and 15.

STEP 17: (Image 24)

Measure two 1" fragments of the Small Hammered Cable Chain to attach the Pendant to the Twig Connector Bar. Attach the 1" fragments of chain to both sides of the Grande Pendant Circle Open.

STEP 18: (Images 25 & 26)

Using a 22-gauge wire, wrap the other end of the 1" fragments to the Twig Connector Bar.

STEP 19: (Image 27)

Attach together the top and bottom pendants using a large jump ring.

STEP 20: (no image)

Assemble chain as desired.